

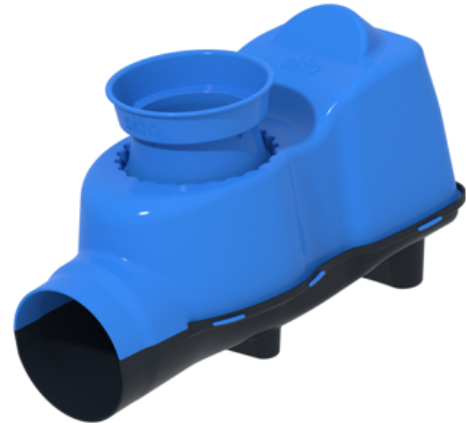
SATO315 UNIVERSAL I-TRAP W/ CERAMIC PAN ADAPTER

Model Numbers:

- SATO315

Features/Benefits:

- Connection and sealing system for ceramic toilet pans
 - For use with various ceramic pans on the market
 - Provides attachment for 110 and 114mm pipes for offset pit application
- Allows 360 degree rotation for pipe orientation
 - 24 discrete locking positions for secure fit of pan
- Self-closing trap door design allows for a small amount of water to create a seal between waste and human environment
 - Minimizes odor and harmful gases - door remains in closed position unless in use or when flushing
 - Prevents insects from entering and escaping pits preventing spread of diseases
 - Water saving
 - Water seal depth: up to 12mm
- Cement used as an inexpensive counterweight material in locations where cement is easily accessible (SATO315 - cement not included)



Description:

SATO315: Universal I-Trap connection and sealing system for ceramic toilet pans. Includes adapter and trap door with full size counterweight cup (cement ready).

Technical Specifications:

Dimensions:

SATO315: 371 x 163 x 211mm

Material:

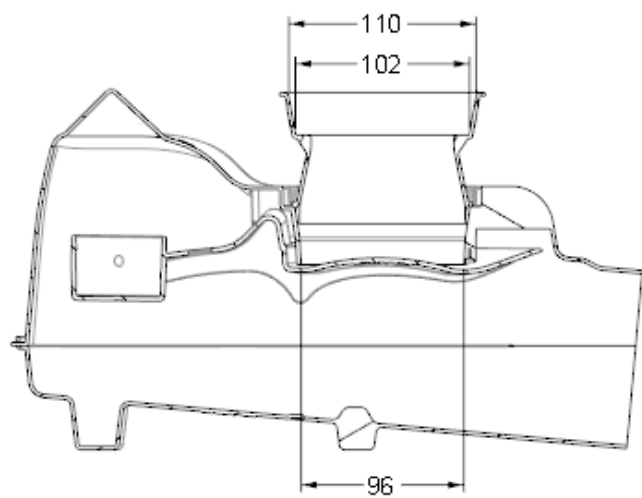
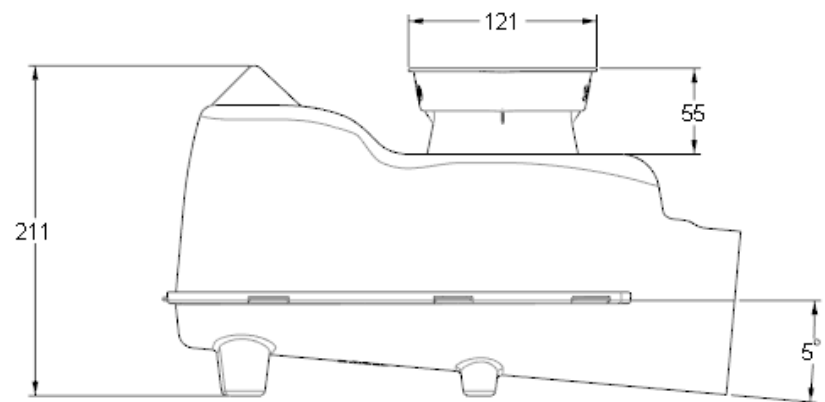
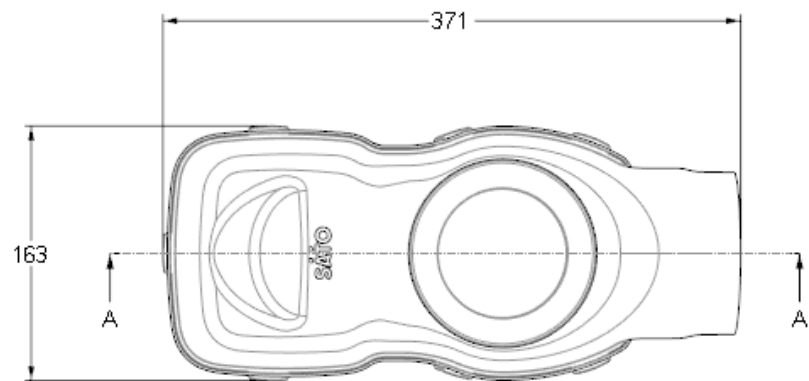
Universal I-Trap and Trap Door: Polypropylene
Adapter: Polypropylene

Weight (Approx.):

Housing: 394g
Door (without counterweight): 76g
Adapter: 52g
Total: 522g

Suggested Flush Volume: 500 mL

SATO315 UNIVERSAL I-TRAP W/ CERAMIC PAN ADAPTER



SECTION A-A