

SATO307 STOOL ADAPTER

Model Numbers:

- SATO307

Features/Benefits:

- Provides attachment for 110mm pipes for
 - Offset pit applications
 - Connection to septic tanks
 - Connection to local sewer systems
- Compatible with SATO101 pan
- Works with cement and rubber counterweights doors (bird door not compatible)



Description:

SATO307: Connection box to easily couple a 110mm pipe to pan to create an offset pit system

Technical Specifications:

Dimensions:

SATO307: 464 x 246 x 272mm

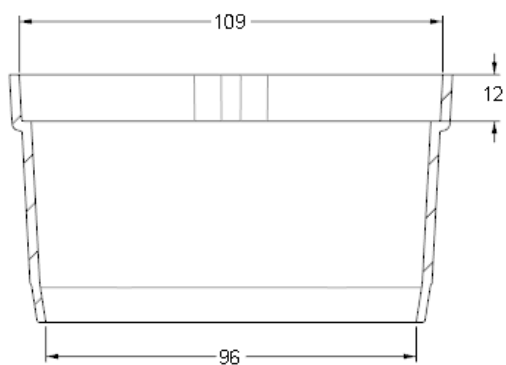
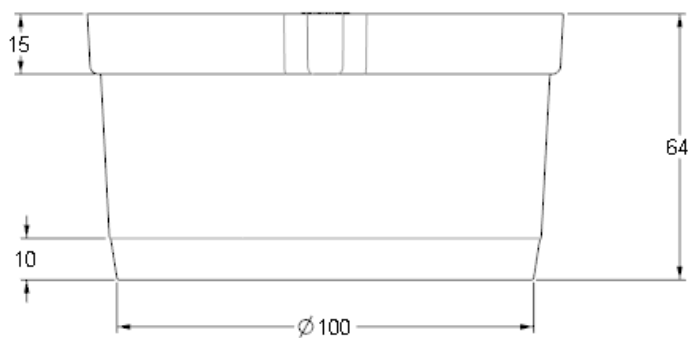
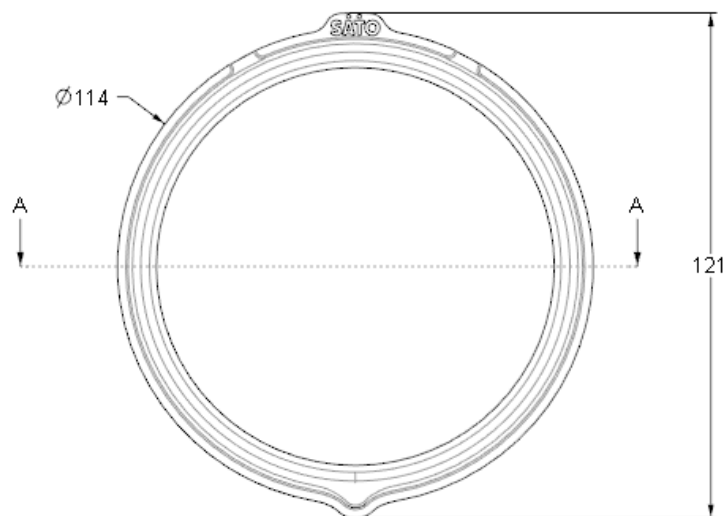
Weight (Approx.):

Connection Box: 490g

Material:

Connection Box: Polypropylene

SATO307 STOOL ADAPTER



SECTION A-A