

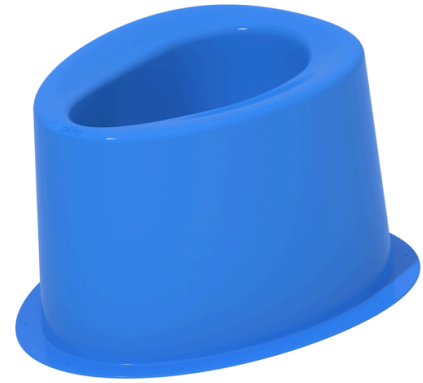
# SATO213 STOOL W/ BIRD DOOR

## Model Numbers:

- SATO213 (shown)
- SATO213Q

## Features/Benefits:

- Comfortable western-style sitting toilet
  - Especially great for the elderly, people with disabilities or pregnant users
  - Durable material that is chemical resistant and vandalism resistant
  - Smooth surfaces for easy cleaning
- Self-closing trap door design allows for a small amount of water to create a seal between waste and human environment
  - Minimizes odor and harmful gases - door remains in closed position unless in use or when flushing
  - Prevents insects from entering and escaping pits preventing spread of diseases
  - Water saving
  - Water seal depth: up to 7mm
- Integrated plastic counterweight for areas where other counterweight materials (e.g. cement or rubber) are not easily accessible
- Integrated flange secures stool into cement or tiled floors - can build up floor material onto flange and directly to stool walls for a cleaner look
  - Mounting holes allow stool to be nailed/screwed down onto other flooring materials (wood, plastic slab, etc.)
- Height and top profile of stool optimized for comfort for all ages and gender
- Quiet-close feature to minimize sound from impact of hard plastic surfaces (SATO213Q)



## Description:

**SATO213:** SATO performance in a comfortable, western-style stool toilet. Advanced door design to reduce water consumption.

**SATO213Q:** SATO performance in a comfortable, western-style stool toilet with a quiet-close feature included. Advanced door design to reduce water consumption.

## Technical Specifications:

### Dimensions:

SATO213(All): 553 x 466 x 405mm

### Material:

Stool and Trap Door: Polypropylene

**Suggested Flush Volume:** 500 mL

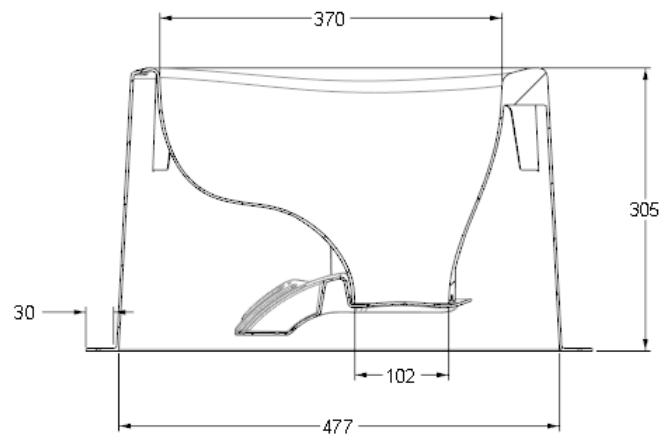
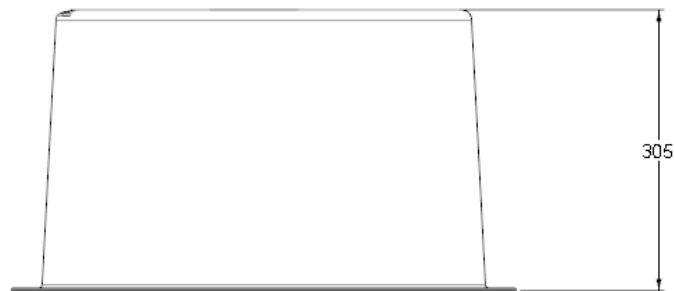
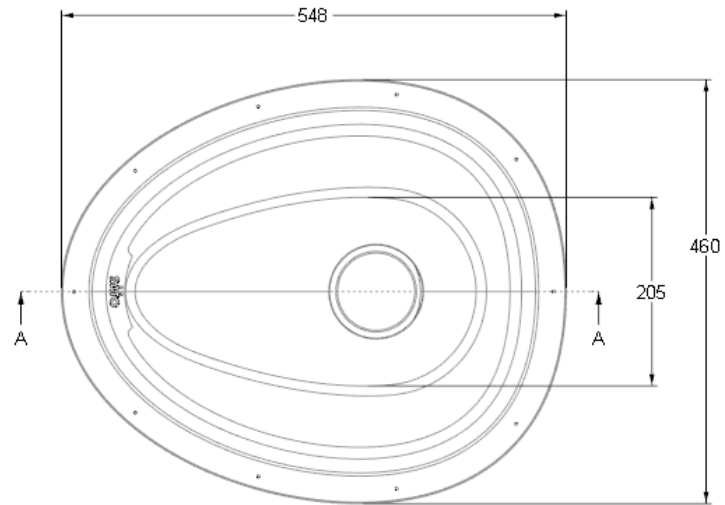
### Weight (Approx.):

Stool: 1.8kg

Door: 137g

Total: 1.9kg

# SATO213 STOOL W/ BIRD DOOR



SECTION: A-A