

SATO704 Slab w/ Pan, Stool, Door and Connection Box

Model Numbers:

- SATO704

Features/Benefits:

- 1200 x 800mm blow-molded slab
 - Lightweight and sturdy design facilitates easy and fast latrine floor construction
- Meets UNHCR procurement requirements
- Includes Connection Box SATO301 for offset pit application
- Comfortable western-style sitting toilet
 - Especially great for the elderly, people with disabilities or pregnant users
 - Durable material that is chemical resistant and vandalism resistant
 - Smooth surfaces for easy cleaning
 - Mounting holes to securely attach stool to slab
- Self-closing trap door design allows for a small amount of water to create a seal between waste and human environment
 - Minimizes odor and harmful gases - door remains in closed position unless in use or when flushing
 - Prevents insects from entering and escaping pits preventing spread of diseases
 - Water saving
 - Water seal depth: up to 12mm
- Rubber counterweight provides ready installation without the need for cement counterweight
- Closed aperture ensures sense of safety, especially for children
- Includes hardware for mounting pan, stool and collection box to slab
- Includes iron pegs (x4) to secure slab to the ground



Description:

SATO704: An all-in-one latrine flooring solution. Includes slab, pan, stool, door and collection box for offset pit setup

Technical specifications:

Dimensions:

SATO704: 1200 x 800 x 632mm (excl. pegs)

Material:

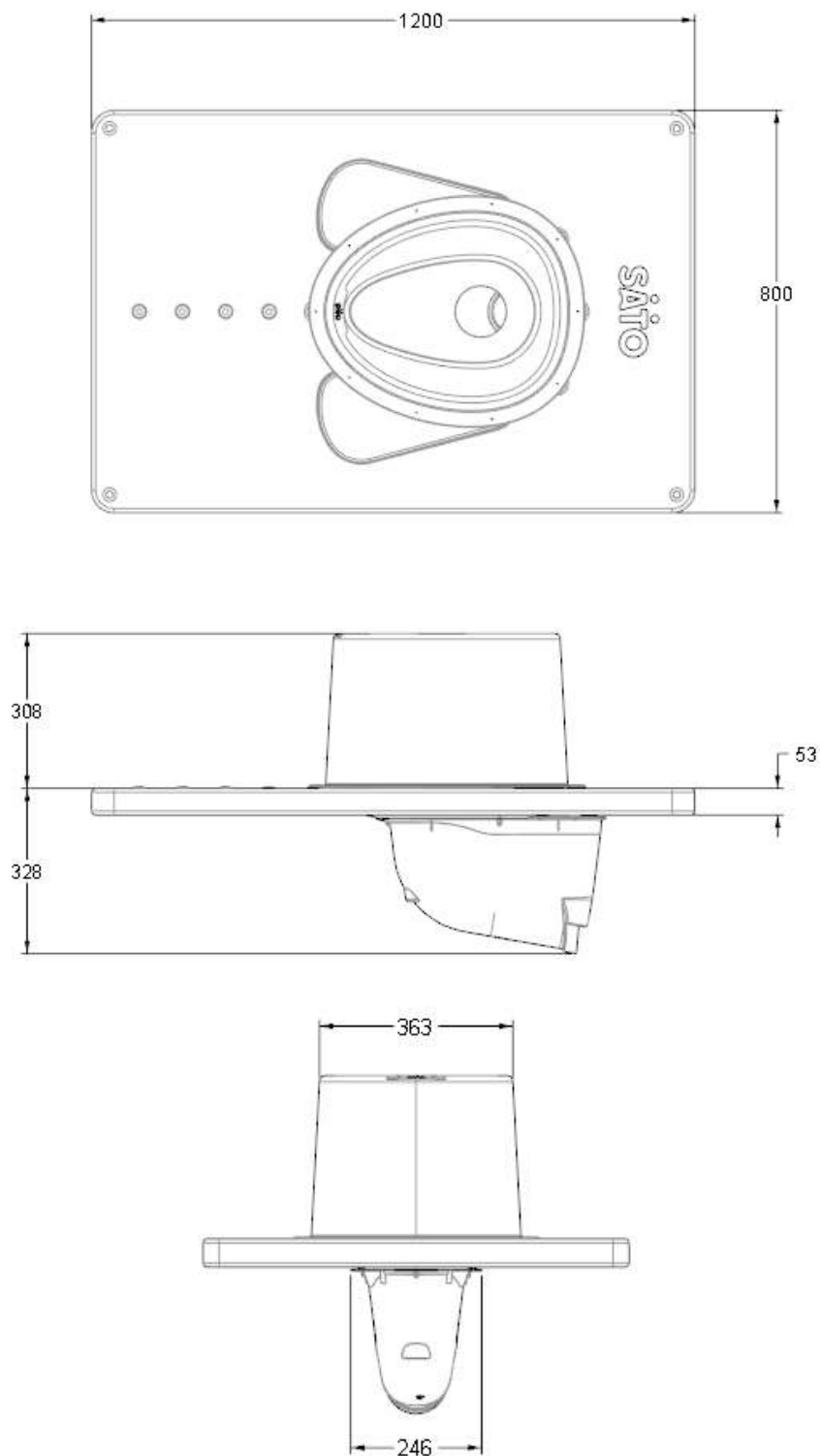
Slab: High-Density Polyethylene
Pan, Stool, Trap Door and Collection Box: Polypropylene
Counterweight: Natural Rubber
Pegs: Iron
Hardware: Stainless Steel

Weight (approx.):

Slab: 11kg
Pan: Approx. 397g
Stool: Approx. 1.8kg
Door (without counterweight): Approx. 76g
Connection Box: 534g
Pegs (x4): 113g each
Rubber counterweight: 130g
Total: 14.4kg

Suggested Flush Volume: 500 mL

SATO704 Slab w/ Pan, Stool, Door and Connection Box



(Iron pegs not shown on views)