

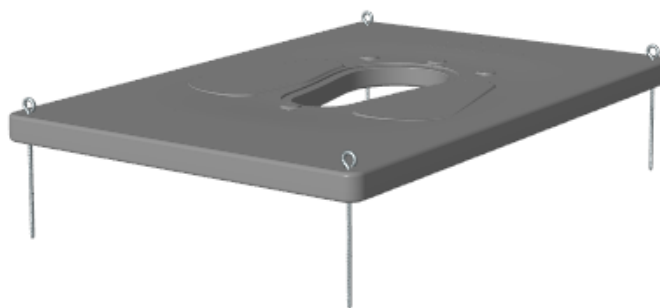
SATO700 Slab

Model Numbers:

- SATO700

Features/Benefits:

- 1200 x 800mm blow-molded slab only
 - Lightweight and sturdy design facilitates easy and fast latrine floor construction
- Meets UNHCR procurement requirements
- Mix and match SATO products for different applications (hardware not included)
 - Designed to fit SATO173/174 series rural pans
 - Attach connection box SATO301 for offset pit applications (compatible only with SATO174 series pans)
 - For more comfortable sitting position, compatible with SATO200 stool
- Includes iron pegs (x4) to secure slab to the ground



Description:

SATO700: Latrine flooring solution. Pan and sealing systems not included

Technical specifications:

Dimensions:

SATO700: 1200 x 800 x 53mm (excl. pegs)

Material:

Slab: High-Density Polyethylene

Pegs: Iron

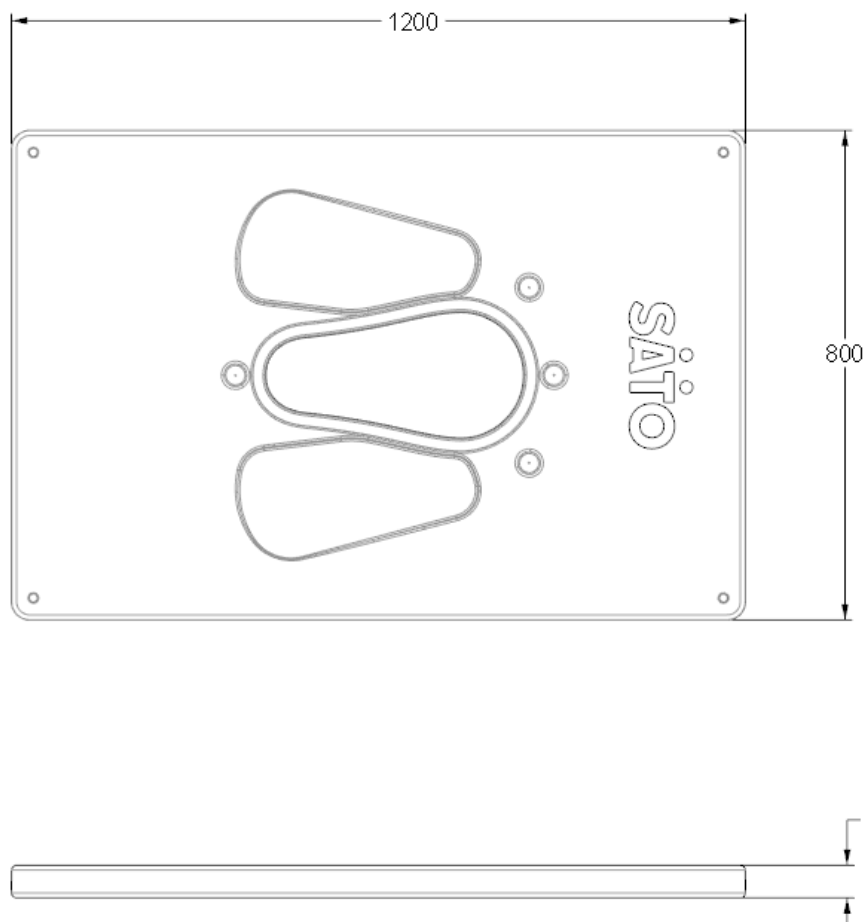
Weight (approx.):

Slab: 11kg

Pegs (x4): 113g each

Total: 11.1kg

SATO700 Slab



(Iron pegs not shown on views)