

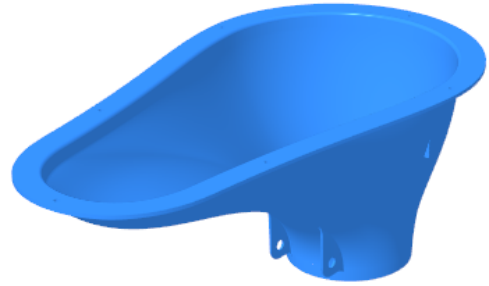
SATO461 "RURAL" PAN

Model Numbers:

- SATO461

Features/Benefits:

- SATO performance and quality in an affordable latrine pan
 - Durable material that is chemical resistant and vandalism resistant
 - Smooth surfaces for easy cleaning
- Does not include trap door
 - Must be paired with a sealing system for user safety
 - Compatible with SATO314 (offset pit) and SATO324 (twin pit) connection and sealing systems
- Mounting holes on flange for secure fitment to slab



Description:

SATO461: Original SATO toilet pan with advanced door design to reduce water consumption. Mounting holes on flange for secure fitment to slab. To be used with a sealing system. Compatible with SATO314 series Universal I-Trap, SATO324 series Universal V-Trap

Technical specifications:

Dimensions:

SATO461: 464 x 248 x 191mm

Pan Interior: 419 x 203 x 191mm

Weight (Approx.):

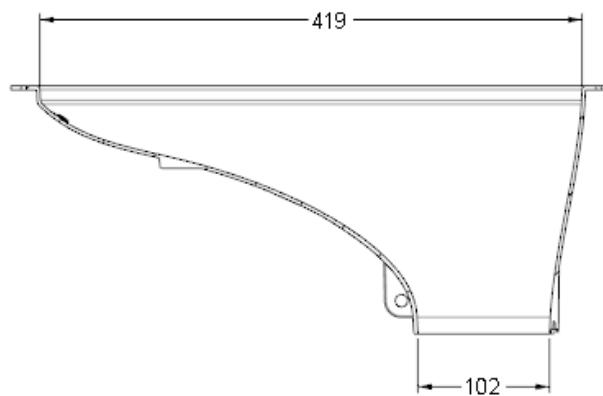
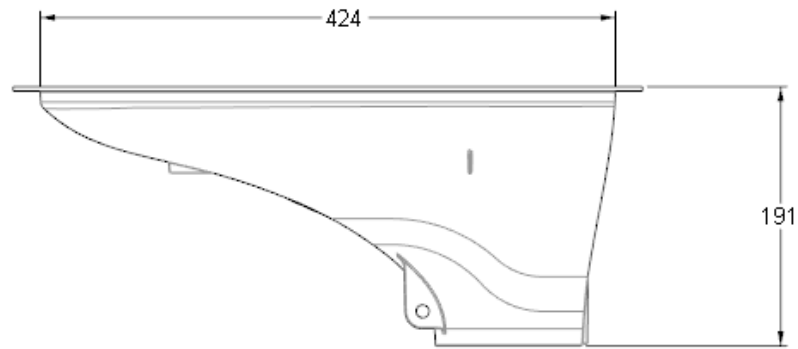
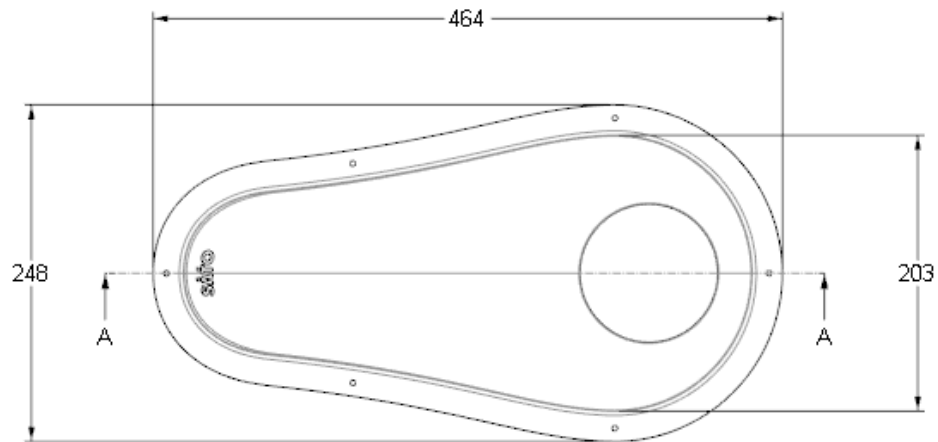
Pan: 397g

Material:

Pan: Polypropylene

Suggested Flush Volume: 500 mL

SATO461 "RURAL" PAN



SECTION: A-A