

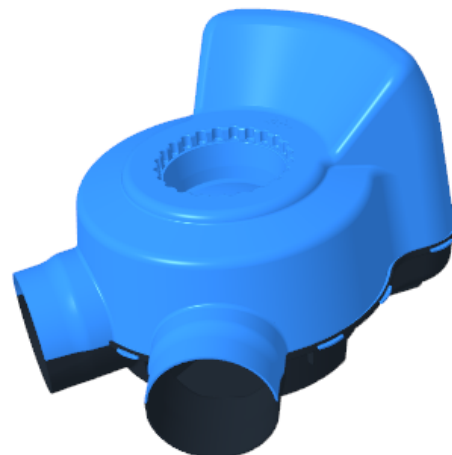
# SATO324 UNIVERSAL V-TRAP W/ CEMENT DOOR

## Model Numbers:

- SATO324 (shown)
- SATO324R

## Features/Benefits:

- Twin-pit switching and sealing system for toilet pans with 100mm outlet
  - Provides attachment for 110 and 114mm pipes for offset pit application
  - Internal rotating mechanism allows for pit switching in seconds
- Allows 360 degree rotation for pipe orientation
  - 24 discrete locking positions for secure fit of pan
- Self-closing trap door design allows for a small amount of water to create a seal between waste and human environment
  - Minimizes odor and harmful gases - door remains in closed position unless in use or when flushing
  - Prevents insects from entering and escaping pits preventing spread of diseases
  - Water saving
  - Water seal depth: up to 12mm
- Cement used as an inexpensive counterweight material in locations where cement is easily accessible (SATO324 - cement not included)
- Rubber counterweight provides ready installation without the need for cement counterweight (SATO324R)



## Description:

**SATO324:** Universal V-Trap twin-pit switching and sealing system for toilet pans with 100mm outlet. Includes trap door with full size counterweight cup (cement ready).

**SATO324R:** Universal V-Trap twin-pit switching and sealing system for toilet pans with 100mm outlet. Includes trap door with full size counterweight cup and molded rubber counterweight.

## Technical Specifications:

### Dimensions:

SATO324 and SATO324R: 456 x 246 x 276mm

### Material:

Universal V-Trap and Trap Door: Polypropylene

Counterweight: Cement or Natural Rubber

### Weight (Approx.):

Housing: 885g

Door (without counterweight): 76g

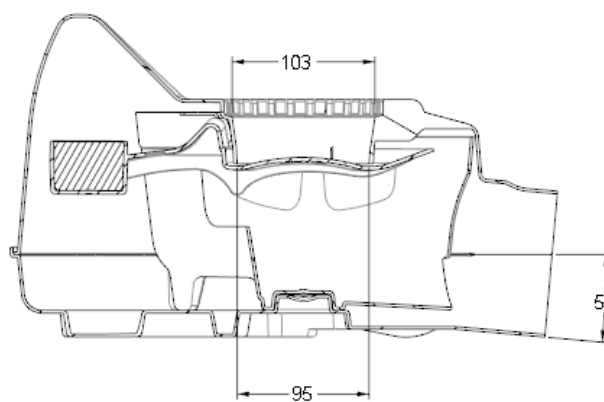
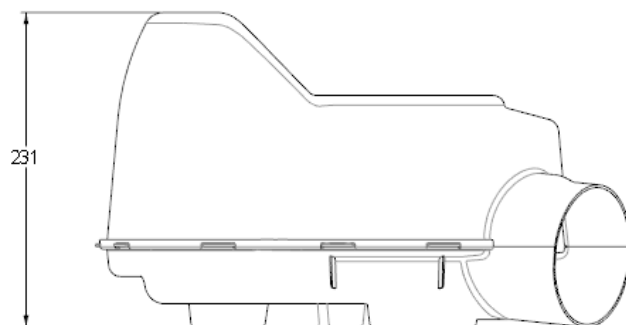
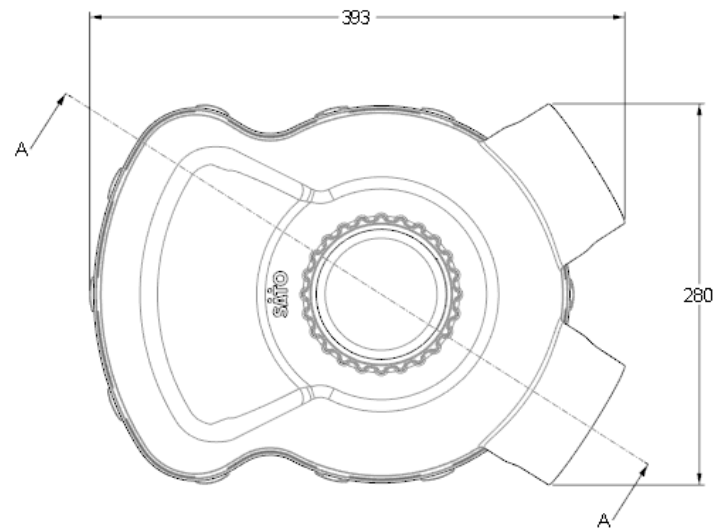
Rubber Counterweight (SATO324R): 130g

Total (SATO324): 961g

Total (SATO324R): 1.1kg

**Suggested Flush Volume:** 500 mL

# SATO324 UNIVERSAL V-TRAP W/ CEMENT DOOR



SECTION: A-A