

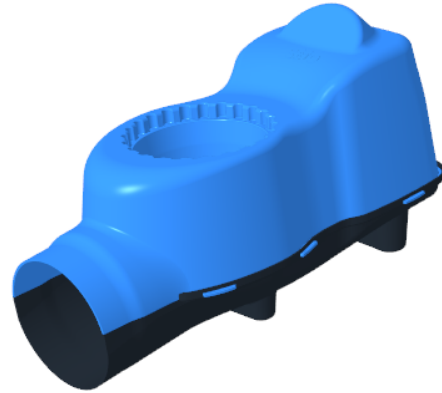
SATO314 UNIVERSAL I-TRAP W/ BIRD DOOR

Model Numbers:

- SATO314 (shown)
- SATO314Q

Features/Benefits:

- Connection and sealing system for toilet pans with 100mm outlet
 - Provides attachment for 110 and 114mm pipes for offset pit application
- Allows 360 degree rotation for pipe orientation
 - 24 discrete locking positions for secure fit of pan
- Self-closing trap door design allows for a small amount of water to create a seal between waste and human environment
 - Minimizes odor and harmful gases - door remains in closed position unless in use or when flushing
 - Prevents insects from entering and escaping pits preventing spread of diseases
 - Water saving
 - Water seal depth: up to 7mm
- Integrated plastic counterweight for areas where other counterweight materials (e.g. cement or rubber) are not easily accessible
- Quiet-close feature to minimize sound from impact of hard plastic surfaces (SATO314Q)



Description:

SATO314: Universal I-Trap connection and sealing system for toilet pans with 100mm outlet. Includes advanced door design to reduce water consumption.

Technical Specifications:

Dimensions:

SATO314 and SATO314Q: 456 x 246 x 276mm

Material:

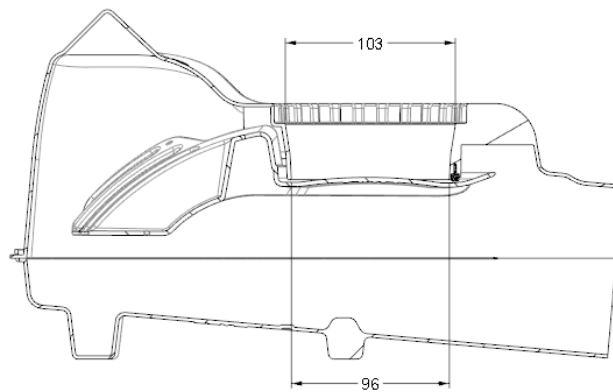
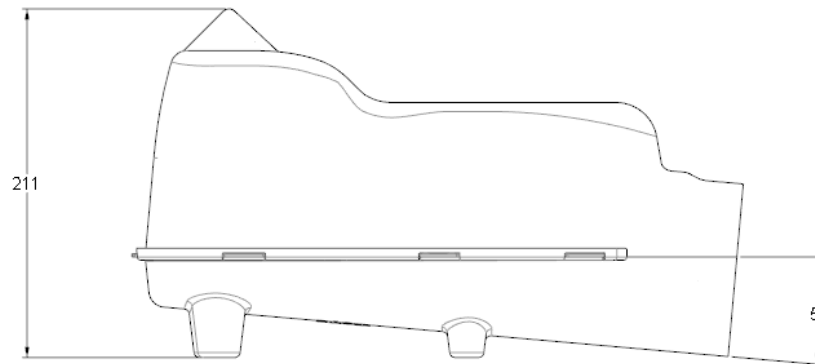
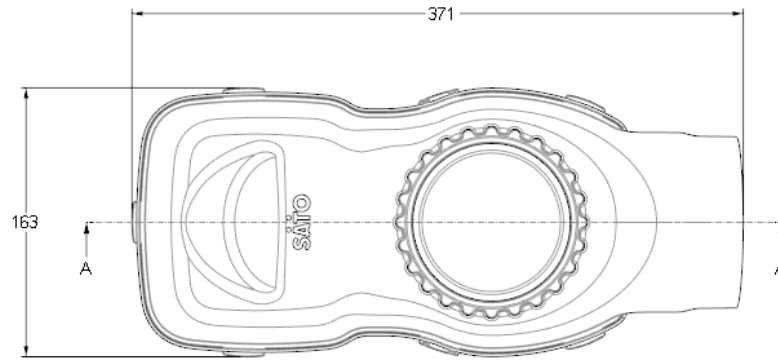
Universal I-Trap and Trap Door: Polypropylene
Quiet-Close Feature: Stainless Steel and EPDM

Weight (Approx.):

Housing: 394g
Door: 137g
Total: 531g

Suggested Flush Volume: 500 mL

SATO314 UNIVERSAL I-TRAP W/ BIRD DOOR



SECTION: A-A