

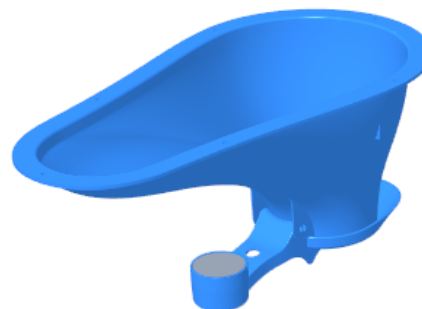
SATO174 "RURAL" PAN W/ CEMENT DOOR, LOCKING TABS

Model Numbers:

- SATO174
- SATO174R
- SATO174WR

Features/Benefits:

- Self-closing trap door design allows for a small amount of water to create a seal between waste and human environment
 - Minimizes odor and harmful gases - door remains in closed position unless in use or when flushing
 - Prevents insects from entering and escaping pits preventing spread of diseases
 - Water saving
 - Water seal depth: up to 12mm
- Cement used as an inexpensive counterweight material in locations where cement is easily accessible (SATO174 - cement not included)
- Rubber counterweight provides ready installation without the need for cement counterweight (SATO174R/174WR)
- Closed aperture ensures sense of safety, especially for children
- Small profile of trap door design allows for installation in tight spaces or with Connection Box SATO301
- Locking tabs for alignment and easy installation of Connection Box SATO301



Description:

SATO174: Original SATO toilet pan with full size counterweight cup (cement ready).

SATO174R: Original SATO toilet pan with full size counterweight cup and molded rubber counterweight included.

SATO174WR: Original SATO toilet pan with full size counterweight cup and molded rubber counterweight included. Pan in white color

Technical specifications:

Dimensions:

SATO101: 464 x 248 x 213mm

Pan Interior: 419 x 203 x 191mm

Weight:

Pan: Approx. 397g

Door (without counterweight): Approx. 76g

Rubber Counterweight: Approx. 130g

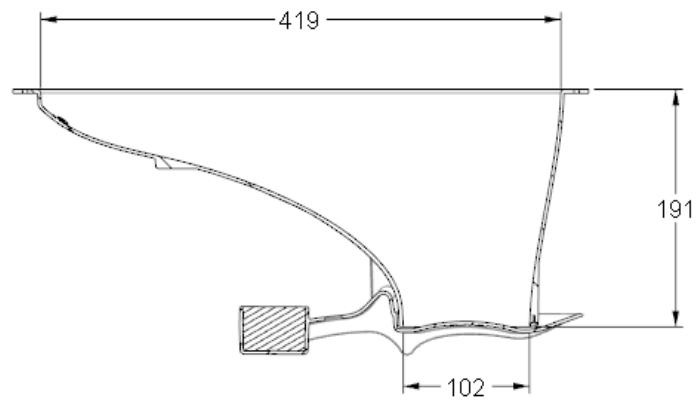
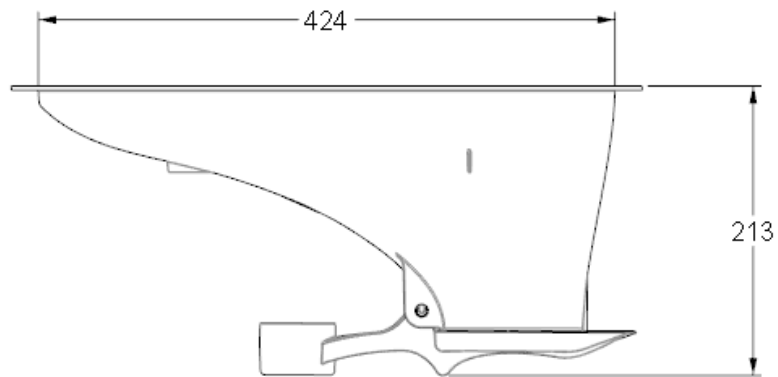
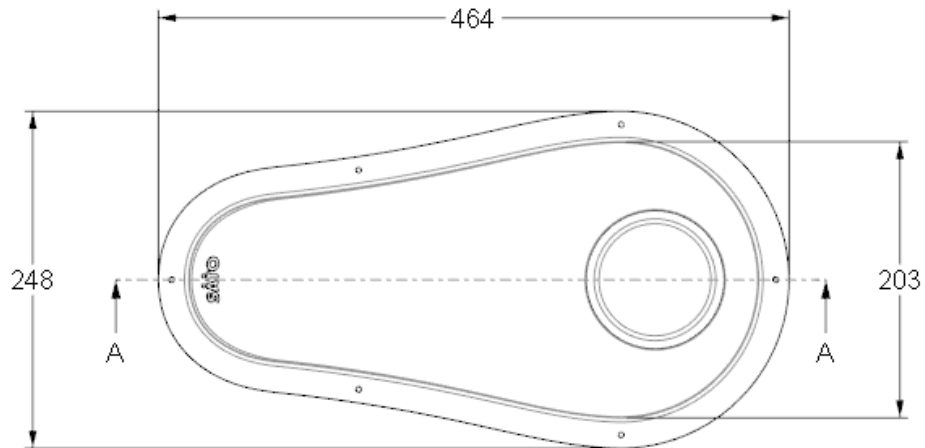
Material:

Pan and Trap Door: Polypropylene

Counterweight: Cement or Natural Rubber

Suggested Flush Volume: 500 mL

SATO174 "RURAL" PAN W/ CEMENT DOOR, LOCKING TABS



SECTION A-A