

**GET  
THAT**

**SATO  
FEELING**

**SATO**  
PART OF **LIXIL**





# A BETTER LIFE. EVERY DAY.



We are SATO, part of LIXIL, an award-winning social business that has positively impacted the lives of more than 45 million people across 44 countries.



Our purpose is simple: to empower people everywhere to live a better life, every day, and to enjoy a brighter future through innovative sanitation and hygiene solutions.



We do this by designing affordable, sustainable, and accessible products based on the specific wants and needs of our customers.



We are proud of our impact and continue to work hard to achieve our goal of improving sanitation and hygiene for 100 million consumers by 2025.



# OUR PRODUCTS

## AWARD-WINNING SANITATION AND HYGIENE SOLUTIONS

From toilet pans and systems to the SATO Tap, our expert design and engineering teams create products that are carefully made to match the specific needs of our end consumers around the world.

### SATO TAP OUR AWARD-WINNING HAND HYGIENE SOLUTION



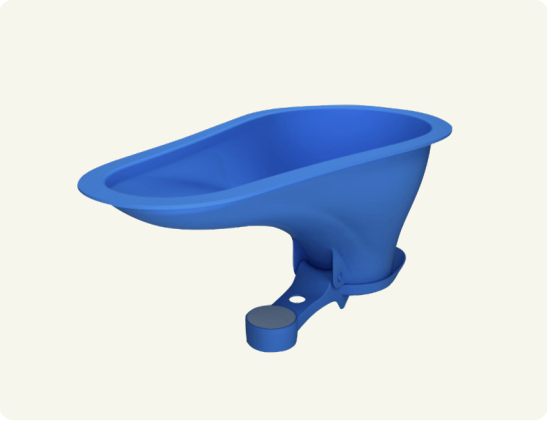
SATO Tap is our brand-new, portable and easy to use hygiene solution that provides households with the benefits of handwashing without needing access to running water.

- Requires no installation. Just place the SATO Tap where you need handwashing! Enables handwashing with as little as 100ml of water
- Its unique design allows for a variety of plastic bottles to be used as a water reservoir, giving a new lease of life to single use PET bottles
- Simple to use– from kids to elderly

**Dimensions**

- 118mmH (without plastic bottle) x 219mmW x 248mmD

### SATO 101 CEMENT DOOR TOILET PAN



The original SATO pan created with a cement counterweight cup offering an affordable and accessible sanitation solution.

- Unique self-closing counterweighted ‘trap door’ is designed to create an air-tight seal that closes off pit latrines from the open air which minimizes odours for enhanced user experience
- Saves water. The pan uses less than one litre per flush – that’s 80% less water than a conventional toilet pan
- Easy to install. Can be embedded into the floor like a conventional toilet pan in new construction or as retrofit in existing toilets

**Dimensions**

- Dimensions: 464mm (L) 248mm (W) 213mm (H)

### SATO 103 BIRD DOOR TOILET PAN



An affordable and accessible sanitation solution that offers a genuine upgrade to open pits specifically designed for the African market.

- Unique self-closing counterweighted ‘trap door’ is designed to create an air-tight seal that closes off pit latrines from the open air which minimizes odours for enhanced user experience
- Saves water. The pan uses less than one litre per flush – that’s 80% less water than a conventional toilet pan
- Easy to install. Can be embedded into the floor like a conventional toilet pan in new construction or as retrofit in existing toilets

**Dimensions**

- 464 (L) x 248 (W) x 225 (H)

## SUSTAINABLE BY DESIGN

Our entire product range is 100% recyclable. Both the SATO Tap and SATO Toilets use 90% and 80% less water respectively compared to their traditional counterparts, which is essential for sustaining good sanitation and hygiene practices in areas challenged by a lack of available water.

### SATO 146 QUIET CLOSE FLEX TOILET PAN



Designed for retro-fitting over a traditional pit with a small aperture the 146 delivers freshness, comfort and safety to households and public institutions that do not have access to running water or sewer systems.

- The rubber bumper reduces the sound of the trap door whilst in operation
- Saves water. The pan uses less than one litre per flush – that’s 80% less water than a conventional toilet pan
- Limited outlet aperture helps to prevent young children from accidentally falling into pits

**Dimensions**

- 540mm (L) 440mm (W) 216.5mm (H)

### SATO 451 RURAL-STYLE TOILET PAN WITH FOOT RESTS



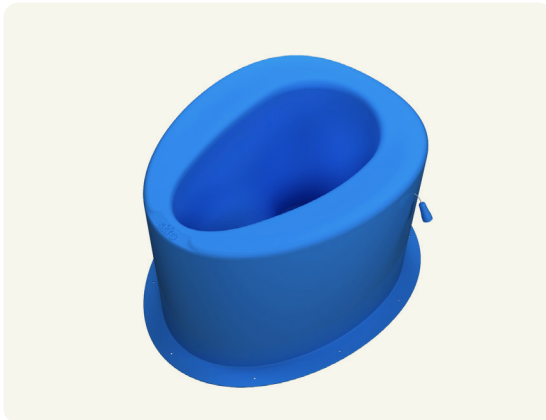
Designed for use with single and twin offset pits and perfect for retro-fitting onto existing latrines.

- The integrated foot rests offer stability and comfort whilst squatting
- Use in conjunction with the I-Trap and V-Trap connection systems for offset pits
- Constructed from durable plastic, it is easy to clean with regular off-the-shelf products
- Also available in White

**Dimensions**

- Dimensions: 445mm (L) 230mm (W) 191mm (H)

### SATO 206 QUIET CLOSE SATO STOOL



The western-style sit stool toilet provides a comfortable and pleasant toilet experience for households without access to a sewerage system.

- Allows comfortable sitting position for all family members, from the young to the elderly
- Provides better access for those with reduced mobility
- Minimizes odour for enhanced user experience
- Saves water. The pan uses less than one litre per flush – that’s 80% less water than a conventional toilet pan

**Dimensions**

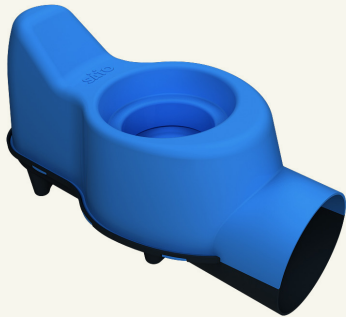
- 548mm (L) 460mm (W) 304.8mm (H)

# OUR PRODUCTS

## DESIGNED FOR LIFE

SATO products offer an end-to-end solution for off-grid safely managed sanitation systems.

## SATO 310 SINGLE OUTLET I-TRAP CONNECTION SYSTEM



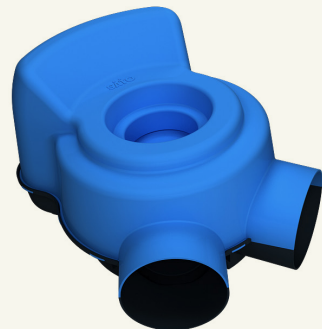
The perfect partner to connect all our toilet pans available in India to a single pit

- The 310 single outlet connection and sealing system helps to minimise odours by diverting waste to an offset single pit
- The I-Trap is designed to house the pan on top and a pipe to the side that directs waste to a single pit
- Connection and sealing system for toilet pans with 90mm outer diameter outlet, including SATO 400, 410 and 450 conventional toilet pans

### Dimensions

- 332mm (L) 155mm (W) 197mm (H)

## SATO 320 TWIN OUTLET V-TRAP CONNECTION SYSTEM



The perfect partner to connect all our toilet pans available in India to two offset pits

- The 320 twin outlet connection and sealing system helps to minimise odours by diverting waste to two offset pits using the SATO 400 series pans and the V-Trap system
- The V-Trap is designed to house the pan on top and two pipes to the side that directs waste to twin offset pits for waste collection
- Connection and sealing system for toilet pans with 90mm outer diameter outlet, including SATO 400, 410, and 450 toilet pans

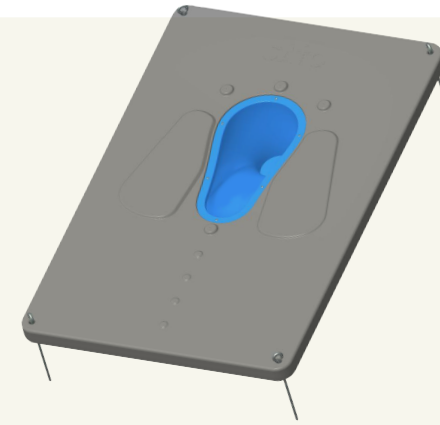
### Dimensions

- 351mm (L) 255mm (W) 211mm (H)

## MODULAR CONSTRUCTION FOR QUICK INSTALLATION

Need to construct a toilet quickly? The sturdy and quick-to-install SATO Slab has been designed to be easy to clean, rugged and self-supporting.

## SATO 701 SLAB WITH BIRD DOOR TOILET PAN

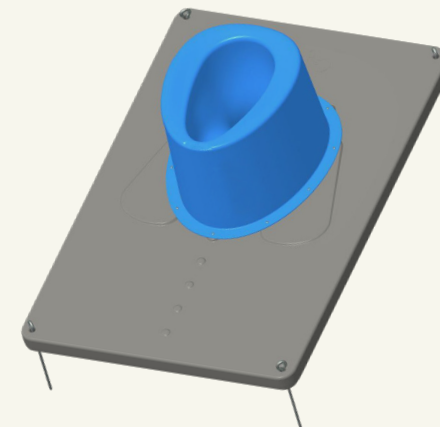


- Comes complete with the SATO pan, requires minimal assembly and with sturdy iron pegs for quick and easy installation
- Self-supporting, load bearing construction requires minimal support underneath
- The one-piece slab has raised foot plates and is easy to clean
- Raised centre bumps provide a pathway for the visually impaired
- Increased safety. Limited outlet aperture helps to prevent young children accidentally falling into pits
- Our innovative SATO pan bird door design creates a self-closing counterweight action to create an air-tight seal to minimize odours
- Minimum order quantity of 2000 pieces

### Dimensions

- 1200mm (L) X 800mm (W) X 53mm (+3mm with footrest) (H)

## SATO 702 SLAB WITH BIRD DOOR TOILET PAN AND STOOL



The western-style sit stool toilet provides a comfortable and pleasant toilet experience providing better access for those with reduced mobility.

- Comes complete with the SATO pan, requires minimal assembly and with sturdy iron pegs for quick and easy installation
- Allows comfortable sitting position for all family members, from the young to the elderly.
- Self-supporting, load bearing construction requires minimal support underneath
- The one-piece slab has raised foot plates and is easy to clean
- Raised centre bumps provide a pathway for the visually impaired
- Our innovative SATO pan bird door design creates a self-closing counterweight action to create an air-tight seal to minimize odours
- Minimum order quantity of 2000 pieces

### Dimensions

- 1200mm (L) X 800mm (W) X 553mm (H)

If you need more information or would like to get in touch, please contact our Customer Experience Centres:



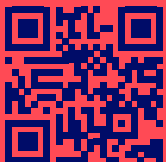
**Africa**

+254 800 722 233  
Mon-Fri 9am-6pm,  
Sat 9am-1pm

**India**

+1800 202 1626  
Mon-Sat 9am-6pm

Or email [SATO@LIXIL.COM](mailto:SATO@LIXIL.COM)



[www.sato.lixil.com](http://www.sato.lixil.com)