

URBAN & RURAL APPLICATIONS

We have the expertise, and global reach to deliver impactful and effective sanitation and hygiene solutions at scale that support specific objectives of governments.

KITUI COUNTY, KENYA

By partnering with the Kitui County Government in Kenya, alongside UNICEF, we were able to improve the lives of an estimated 138,000 Kenyans through sanitation solutions.

This project, which started in 2016, has resulted in the county being declared Open Defecation Free since 2018. As a result of this, there have been zero cholera outbreaks since, whilst stunting rates among babies have dropped from 47% to 25%, having almost halved according to the Ministry of public Health in Kitui County.

“

So far, we have reached over 23,000 households that have installed SATO products. We have also installed SATO Taps and have seen a drastic reduction of diarrhoeal diseases, and the communities are also appreciating that they are not experiencing any smell. SATO is taking care of all of that.

FAITH KANINI MUTINDA, DEPUTY DIRECTOR OF PUBLIC HEALTH, KITUI COUNTY, KENYA



LILONGWE, MALAWI

By working with the Lilongwe City Water Board, we were able to put 30,000 units of SATO products into the hands of Malawi capital's consumers. These products have the combined potential to improve the lives of 180,000 people across the country's capital, putting a significant dent in the sanitation and hygiene challenges of the city and the country.

SATO has also worked to establish a mason engagement programme in Malawi's capital. This saw the successful training of 80 masons, ensuring Lilongwe has enough skilled personnel to install and maintain our life-changing products.



FROM MINISTRIES AND MUNICIPAL GOVERNMENTS TO CITY WATER BOARDS, WE HAVE EXPERIENCE COLLABORATING WITH AFRICAN CIVIC AUTHORITIES TO DELIVER IMPACTFUL AND EFFECTIVE SANITATION AND HYGIENE SOLUTIONS AT SCALE.

Get in touch with Fredrick Nyambare, Leader, Africa Partnerships, to find out more:

Fredrick.nyambare@lixil.com



SATO
A BETTER LIFE.
EVERY DAY.

WORKING WITH GOVERNMENTS

Your national partner in accelerating sustainable sanitation and hygiene access for all



SATO was developed in response to households and governments who said there was a lack of affordable and appealing sanitation solutions that met their needs. Our award-winning sanitation and hygiene products deliver excellent toilet and hygiene experiences, at a fraction of the cost of typical toilets, using much less water.

Previously underserved people who were using low quality facilities, such as unimproved pit latrines, or nothing at all, now have access to solutions that have improved the lives over 45 million people in 45 countries so far.

The efficiency and popularity of SATO means that it can offer many benefits:

ENVIRONMENT

- * Our water-saving sanitation products, which use less than 1 litre per flush, 80% less than conventional toilets, provide an off-grid and water-conscious solution for rural and peri-urban communities.
- * Our hand-washing solution allows handwashing with as little as 100ml.
- * By combining our products, such as the SATO Pan and I-Trap, we offer an end-to-end solution to safely managed sanitation.

HEALTH

- * Strong sanitation and hygiene are vital to public health.
- * Our products, including the SATO Tap and Pan, are designed to prevent the spread of infectious diseases.

FINANCE

- * According to research by LIXIL, poor sanitation levies a burden of roughly \$19.3 billion dollars on Africa's economy.
- * Better sanitation and hygiene unlock untapped economic value by cultivating a healthy workforce and easing social public pressures on services, driving productivity.

EDUCATION

- * Access to toilets remains one of the main factors behind absenteeism among Africa's students, especially for girls.
- * Improved sanitation and hygiene services have been shown to combat this issue, encouraging children and teenagers to attend and remain in school.

WHY SATO?



At SATO, our purpose is to empower people everywhere to live a better life every day. In just 10 years, we have built a full portfolio of affordable solutions that serve customers with affordable sanitation and hygiene solutions in rural and peri-urban areas. Now, as we turn to UN SDG 6.2's 2030 goal, we believe SATO is a vital partner for governments that want to address sanitation and hygiene shortages.

ERIN MCCUSKER, LEADER



DRIVEN BY GROWTH

As LIXIL's social business, SATO reinvests all profits back into innovation to support the needs of consumers across Asia and Africa.

LOCAL MANUFACTURING HUBS

While SATO is a global organisation, we are proud to have a strong presence in Africa. We have manufacturing hubs in Nigeria, Kenya, Uganda and Tanzania which gives us export opportunities into neighbouring markets.

TECHNOLOGY PARTNER OF CHOICE

We work with a truly international network of organisations, from national governments to local organisations and to multi-national agencies like USAID and UNICEF, to create solutions that address to the needs of communities around the world.

IMPACT FOCUSED

We're proud to have impacted the lives of more than 45 million people across 45 countries, creating significant health, social and economic value in the process.

UNMATCHED SCALE

SATO leverages LIXIL's heritage and world-leading expertise in new product development and engineering to create solutions, test them in the field, adapt, and make them available in the market, meeting customers where they are.



SATO PRODUCTS

At SATO, we use our design and engineering expertise to create affordable, water-saving, durable products that deliver improved experiences and solve the everyday, challenges faced by communities in Asia and Africa. Our products are easily installed with tailored end-to-end solutions for households, schools, health care facilities, humanitarian settings and more.



SATO PAN

brings a flush toilet experience to on-site system users at excellent value and using a little water to flush

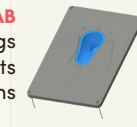


SATO FLEX PAN

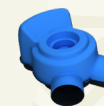
all the benefits of the pan with even more space and comfort



SATO STOOL
a raised seat for comfort and ease



SATO SLAB
built for humanitarian settings and delivering the same benefits as all our sanitation solutions



SATO V-TRAP

allows easy switching between twin pit systems



SATO TAP

easy hand-free and water-saving handwashing facility



SATO I-TRAP
a simple solution for all connections to indirect pits, septic and other systems

When combined, our products create an end-to-end solution to safely managed sanitation, helping consumers unlock health, social and economic benefits.

But don't just take our word for it...

